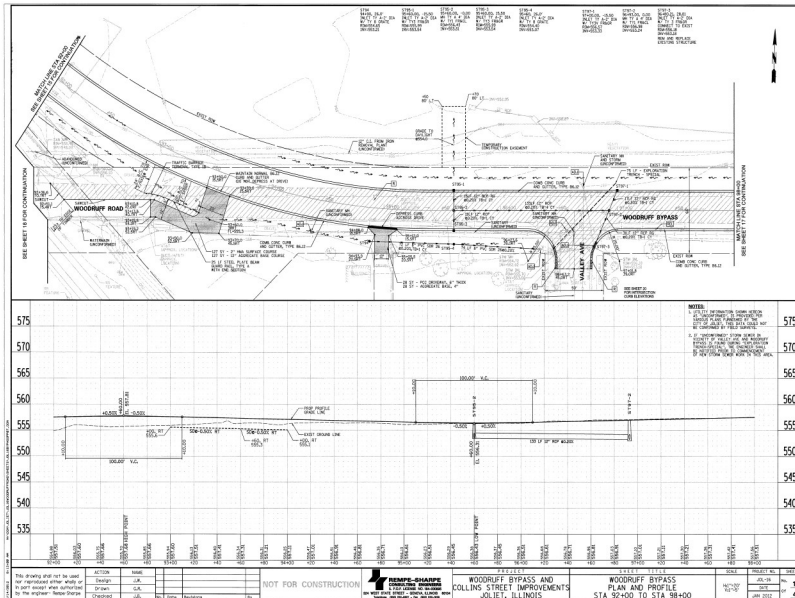


# WOODRUFF BY-PASS — JOLIET 2012

Client: City of Joliet

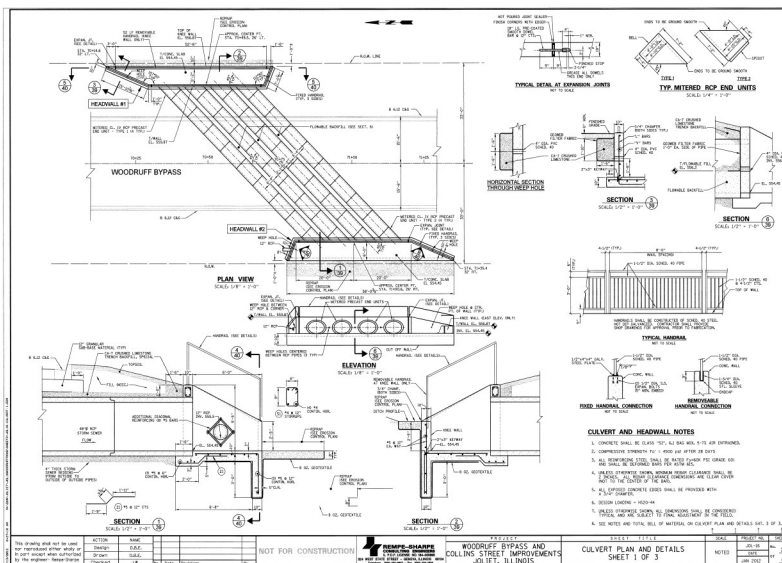


An existing at-grade crossing of Woodruff Road with the Canadian National Railroad (CN), just outside of their Joliet yard was causing extended roadway crossing time delays and rail traffic bottleneck congestion near the critical Des Plaines River Bridge.

Rempe-Sharpe:

- ◆ Designed and prepared complete Phase II construction drawings (PS&E) for Woodruff Bypass, a 4200' long, new alignment of roadway, from east of the current at-grade crossing to Collins Road (IL 171)-designed scope completed 2012.
- ◆ Designed new roadway striping geometric for Collins Road, in the vicinity of the new intersection to accommodate the overall improvement.
- ◆ Coordinated and supervised the preparation of survey documents for the requisite right-of-way and easements.
- ◆ Provided assistance in coordinating various project elements between the City of Joliet, CNRR, IDOC, IDOT, and Lockport Township.
- ◆ Coordinated efforts to identify and remediate environmental issues along the proposed roadway alignment.

## Realign Collector Street to Remove At Grade CN Railroad Crossing



The proposed roadway is on land owned by the State of Illinois, Department of Corrections. A state operated shooting range facility (to be relocated in conjunction with this work) occupied a portion of the area scheduled for the road improvement. Rempe-Sharpe assisted the City of Joliet in providing pro-active coordination services on their behalf in negotiating with IDOC, and in designing a new access roadway to IDOC's relocated shooting range on the grounds of Stateville prison.

Construction Cost: \$2.245 Million  
Completed: October 2013

## Allow Expansion Program of CN Joliet Yard

**REFERENCE:**  
Jim Trizna, P.E.  
City of Joliet  
815.724.4210

