

Pinnacle Foods - St. Elmo Plant Addition 2015-2016

St. Elmo, Illinois

Rempe-Sharpe provided structural and civil engineering design scope including plans, specifications, quantities, estimates and permit for the Pinnacle Foods 2015 Plant Expansion in St. Elmo, Illinois to add 48,000 SF to the existing plant in order to increase capacity to produce all of the Wishbone salad dressing for the Midwest.

Scope of Services Included:

- ◆ Topographic survey of the entire plant site including hard shots of all surface appurtenances, grade elevation shots at approximately 50' centers, edge of pavement, verification of site utilities, building docks, doors and exterior process equipment;
- ◆ A stormwater report in support of permit analyzing existing condition runoff and proposed runoff,;
- ◆ Analysis and design of stormwater management with coordination through the Village of St. Elmo/Fayette County for approval and permitting;
- ◆ Site civil mass grading plans, SWPPP, site demolition plans, site grading and soil erosion control, utility plan and profile, detailed stormwater management sections and details plan sheets were created;
- ◆ Civil quantities and Engineer's Opinion of Probable Cost ;
- ◆ IEPA Permits submission;
- ◆ Project specifications;
- ◆ Attendance at meetings and project management assistance;
- ◆ Bid cycle assistance to issue RFI's, attendance at pre-bid conference and attendance at coordination meeting at site with the client.

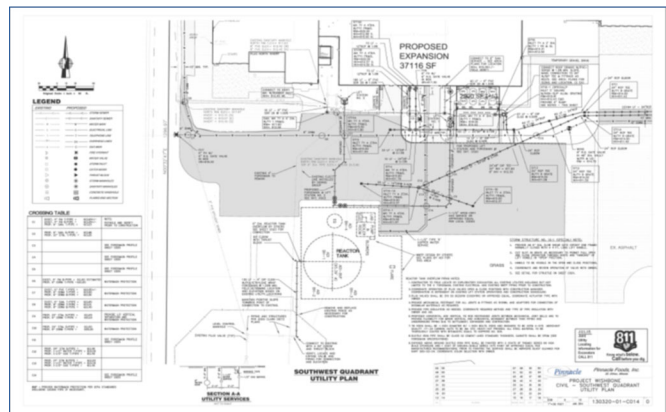
Original Project Cost: \$19,500,000.00
Value-Engineered Cost: \$17,600,000.00

REFERENCE:

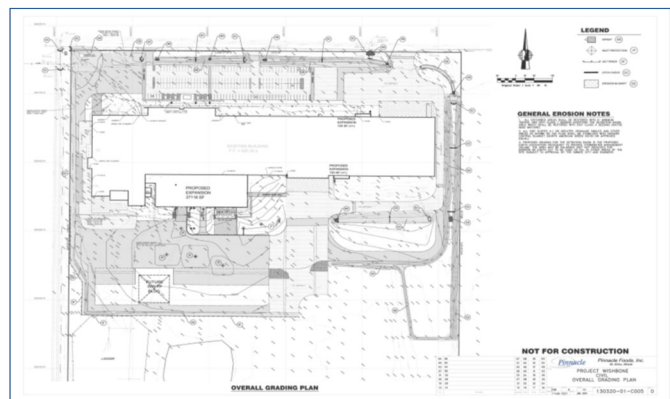
Thomas Perkins, Plant Manager
 Pinnacle Foods, Inc.



Plant expansion where Wishbone salad dressing is produced for the entire Midwest.



Pre-treatment facilities for low pH effluent.



Cost effective on-site storm water management.