

# Orchard Road I-88 to Randall Road

## North Aurora, Illinois

A series of large scale commercial projects (including Woodman's, Target, Best Buy and J.C. Penney) dictated an upgraded addition of signalization and channelized left hand turn bays to meet 20 year peak hour turning movement volumes from SRA route.

### Rempe-Sharpe:

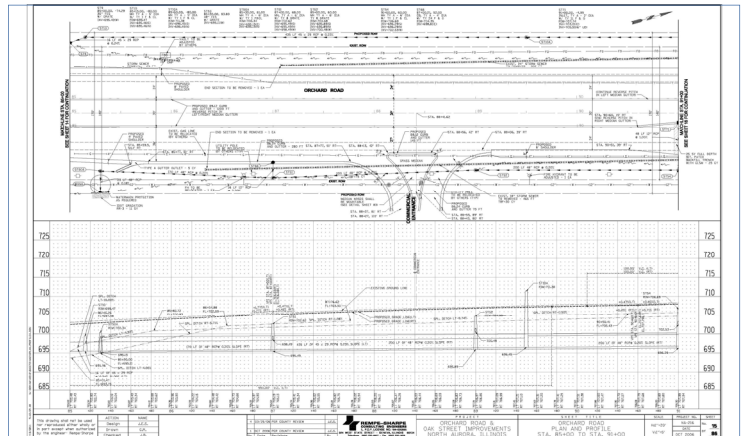
- ◆ Compiled Topographic Data
- ◆ Coordinated Utility Relocations
- ◆ Prepared Phase II Plans and Specifications including Pavement Structure, Stormwater Conveyance System, Construction Staging, and Detour Plans.
- ◆ Coordinated Easement Acquisition
- ◆ Provided Construction Management including Layout and Staking, Design Revisions, Documentation of Contract Quantities, Pay Estimates;
- ◆ Served as Liaison between County Highway Department, Village of North Aurora and Contractor.

The project widened Orchard Road, added signals and created dual left turn bays for three (3) critical intersections from I-88 north to Randall Road. The project allowed 700,000 square feet of commercial development.

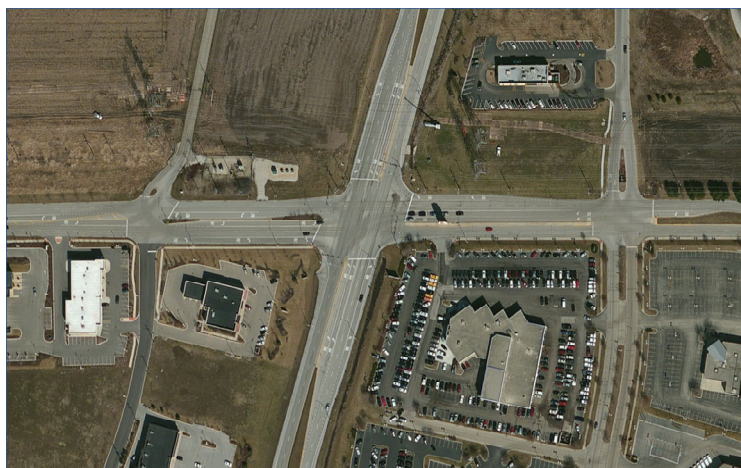
Construction Cost: \$6.0 Million



**REFERENCE:**  
 Brian Richter  
 Public Works Director  
 630.897.8228



**Upgraded Geometrics on Strategic Regional Arterial**



**Final Product Allows 700,000 SF Retail Expansion**

