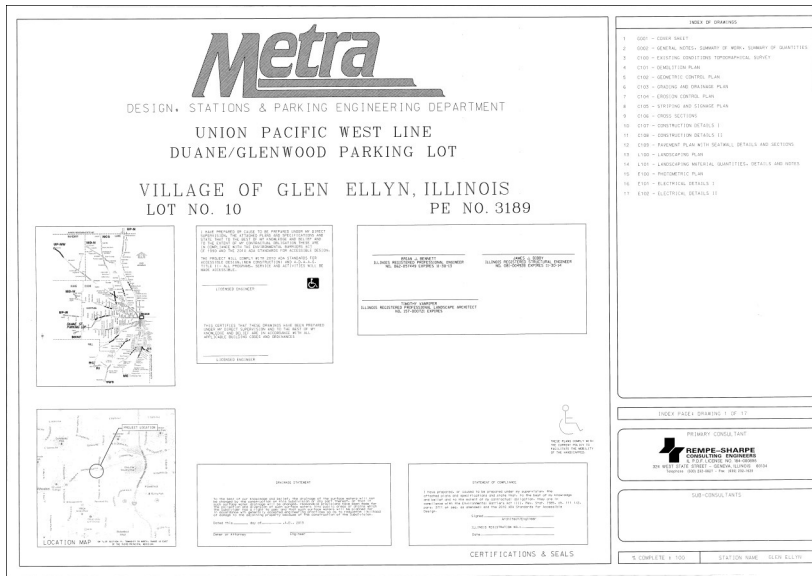


GLENWOOD-DUANE PARKING LOT—GLEN ELLYN



METRA Funded Commuter Parking Serves Multiple Uses



3D Rendering of Glen Ellyn Commuter Parking Lot

Client: Village of Glen Ellyn (Grant Funded Through METRA)

The Village of Glen Ellyn was challenged in 2013 to fast track design of a commuter lot that would serve several functions just west of the downtown. Rempe-Sharpe accelerated the project back onto intended schedule by meeting a number of METRA requirements smoothly and seamlessly.

Rempe-Sharpe:

- ◆ Reviewed Village roadway and utility plans and reports
- ◆ Performed topographic and utility surveys
- ◆ Prepared base sheets
- ◆ Performed pavement and watermain analyses and assessment
- ◆ Performed stormwater hydrology/hydraulic assessments
- ◆ Attended Plan Commission, Board, Staff and public meetings
- ◆ Prepared IEPA permits
- ◆ Prepared preliminary and final plans, specifications and estimates
- ◆ Construction Phase Services
- ◆ Grant Administration

State of the art LED lighting, below grade stormwater storage, and aesthetic upgrades enhance multi-use nature to serve commuters, commercial district, church and school campuses.

Construction Cost: \$648,600

REFERENCES:

Craig Pryde
Public Works Trustee
Village of Glen Ellyn
630-469-6756

