

# KAUTZ ROAD LIFT STATION—GENEVA

**Client: City of Geneva**

The City's Northeast Side was being pressured to provide sanitary sewer service or lose the area to the City of West Chicago. RSA studied and designed a lift station with a divided wet well for ease of cleaning.

**Rempe-Sharpe:**

- ◆ Estimated projected flows, both initial flow and future flow.
- ◆ Calculated system head curves and pump curves for both flow conditions. Pumps were selected that would meet both conditions with change in impeller and motor.
- ◆ Designed wet well to flow into either divided half while maintaining equal levels during normal operation.
- ◆ Selected pumping equipment to meet demands
- ◆ Prepared design drawings and specifications reflecting the recommended equipment and most appropriate piping and equipment layout.
- ◆ Provided shop drawing reviews and construction related services.

The divided wet well proved a significant benefit due to a grease spill which allowed the spill to flow into one of the divided wet/wells while closing the other until spill was contained.

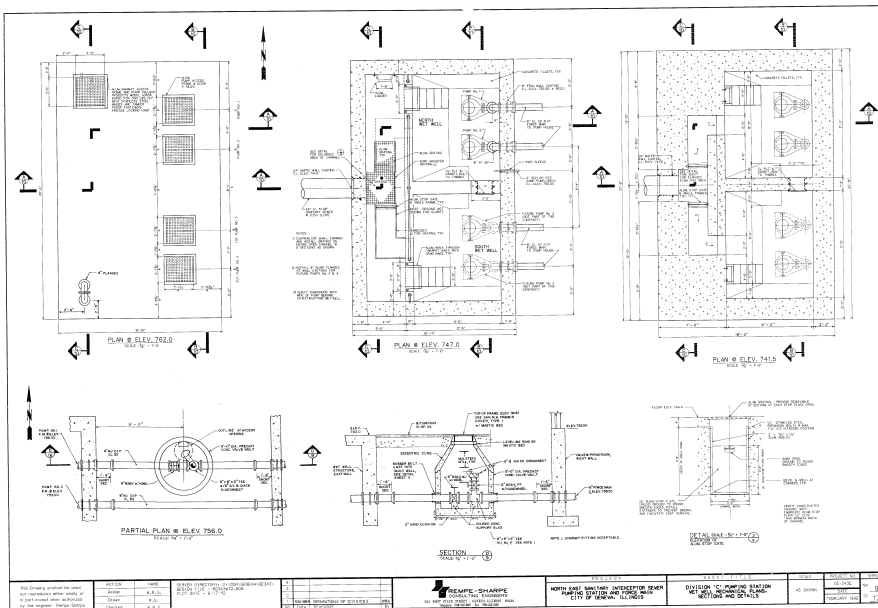
Initial Capacity: 1,000 gpm.

Ultimate Capacity: 4,500 gpm

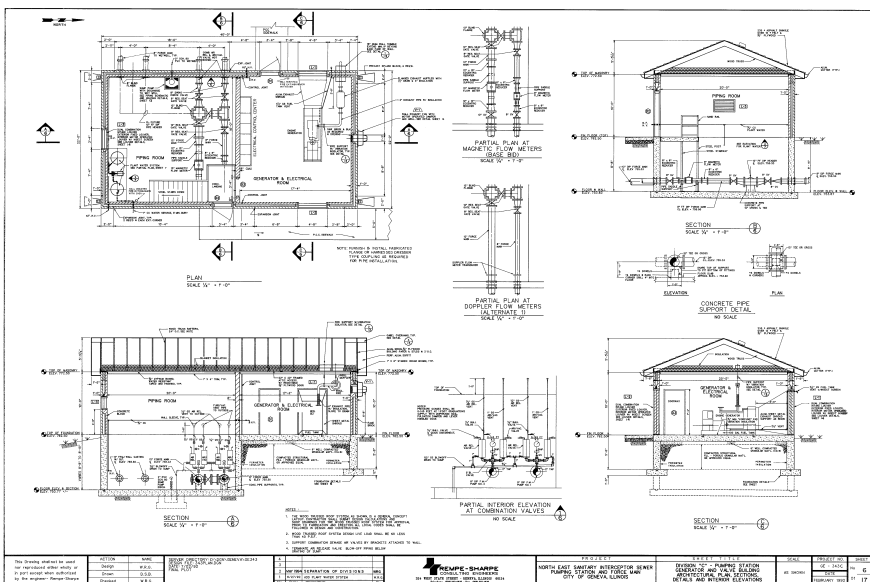
Construction Cost: \$700,000

**REFERENCE:**

Bob VanGyseghem  
Supt of Water and Wastewater  
630.232.1501



**Lift Station Allows Expansive Industrial Development**



**Full Scope from Conceptual Report To Resident Engineering**

