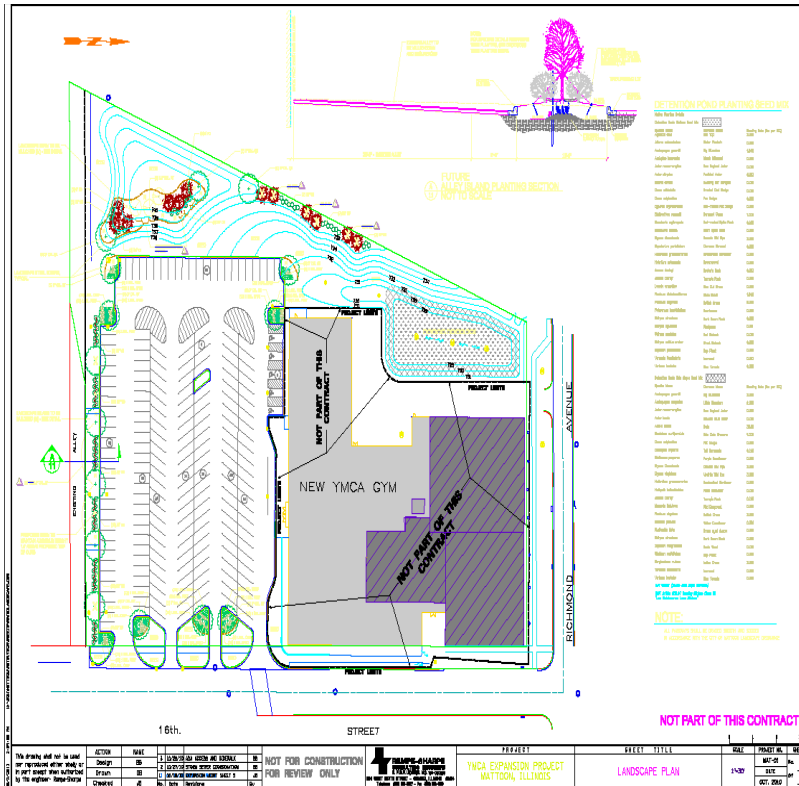


YMCA PARKING LOT—MATTOON



Fast Track Municipal Stormwater and Parking Design



PCC Parking Lot Construction Revives Downtown

Client: City of Mattoon

The City of Mattoon retained Rempe-Sharpe to provide fast track comprehensive design services to reconstruct a 400 stall parking lot in order to keep the downtown YMCA expansion moving forward on schedule. The project also resolved historical flooding overflow issues for the YMCA and neighboring businesses.

Rempe-Sharpe:

- ◆ Conducted topographic surveys
- ◆ Conducted client workshop to overview alternatives to achieve desired circulation and parking count
- ◆ Provided positive stormwater upgrade
- ◆ Prepared preliminary and final plans, specifications and estimates
- ◆ Provided upgraded LED lighting
- ◆ Completed ahead of schedule

Rempe-Sharpe reviewed alternatives to achieve desired circulation and parking count, provided a positive stormwater upgrade, and value-engineer cost savings. Provided full civil engineering plan set including geometrics, grading, utilities, SWPP, details, quantities, estimate and specifications. A Stormwater management/detention pond was analyzed and contoured to provide stage/storage benefit to the adjoining facilities

Construction Cost: \$ 900,000

REFERENCE:

Sue McLaughlin
Village Administrator
217.234.7367

