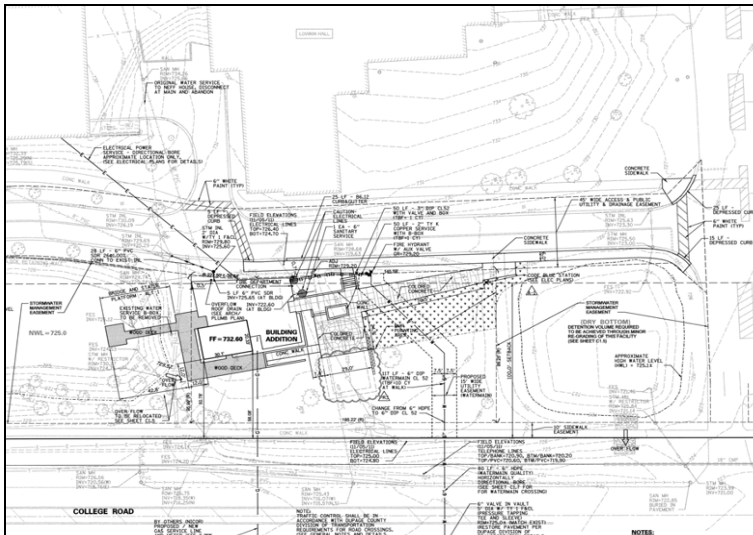


# NEFF HOUSE ALUMNI CENTER—BENEDICTINE UNIVERSITY

**Client: Benedictine University**



**Detailed Civil Plans are Critical**



**Challenging Campus Infill Project**

A dedicated alumni meeting space had not previously existed on the University's Lisle campus; however a stone-façade residence dating from the 1800's (unoccupied of late) did exist near Benedictine's easterly entrance. Creation of a space with suitable outside gathering areas for alumni events, adjoining a renovated and expanded Neff House structure with offices for related uses, was the answer. Nestled between two existing stormwater management facilities, an outside patio and lawn area provide space for alumni events, while a **native-planted Best Management Practice (BMP)** area provides improved water-quality for site runoff before excess stormwater from the improvement is temporarily stored in one of the expanded adjoining detention facilities.

Rempe-Sharpe:

- ◆ Conducted site specific topographic surveys
- ◆ Provided utility services
- ◆ Designed site geometric design and grading plans
- ◆ Coordinated BMP calculations and collaboration, stormwater management and permitting
- ◆ Provided construction phase services

In cooperation with the DLR Group and Hitchcock Design Group, prepared a comprehensive and cost-effective package of construction documents to address Benedictine University's requirements.

Construction began in early 2012 with completion Fall of 2012.

Construction Estimate: \$1,500,000.00

**REFERENCE:**

Chad Treisch  
Executive Director  
Office of Campus Planning, Design  
and Construction Management  
630.829.6612

